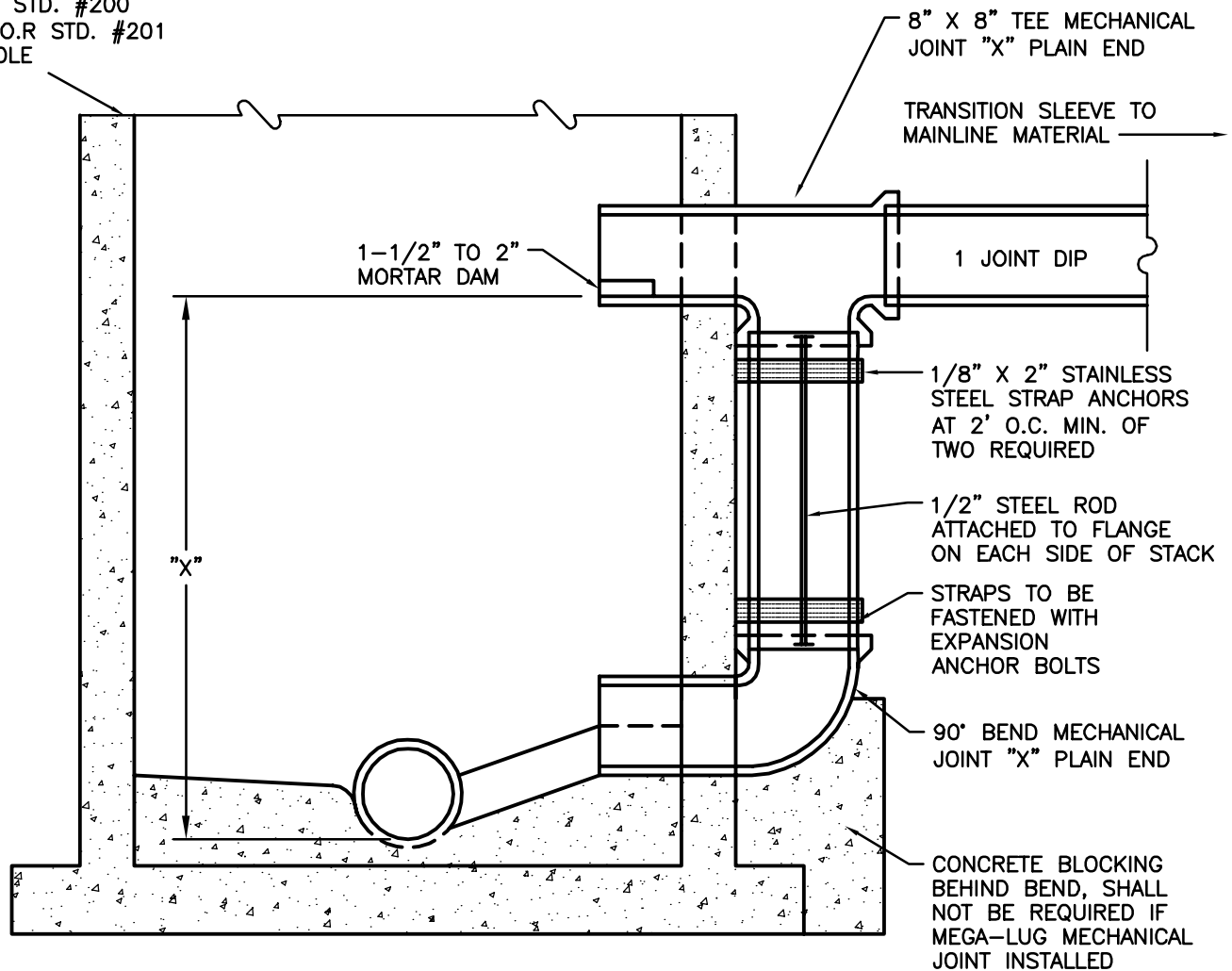


C.O.R. STD. #200  
OR C.O.R. STD. #201  
MANHOLE



EXTERIOR

NOTES:

THIS DETAIL SHALL BE USED ONLY WHERE INDICATED ON PLANS.

ALL EXTERIOR DROP PIPE AND FITTINGS TO BE DUCTILE IRON.

MEGALUG MAY BE USED AS A METHOD OF RESTRAINT IN LIEU OF 1/2" STEEL ROD ATTACHED TO FLANGE ON EACH SIDE OF STACK.

ALL CONNECTIONS TO PRECAST MANHOLE STRUCTURES SHALL BE WATERTIGHT.

PROPOSED CONNECTION TO BE USED WHERE "X" EXCEEDS 2'-0" FROM INVERT OUT.

DATE: 3/1/14

CITY OF REIDSVILLE

STANDARD EXTERIOR DROP CONNECTION FOR  
SANITARY SEWER MANHOLE

STD. NO.

REV.

202