

NOTES:

CONCRETE SHALL BE CLASS AA, 4,000 PSI AS PER ASTM-478.

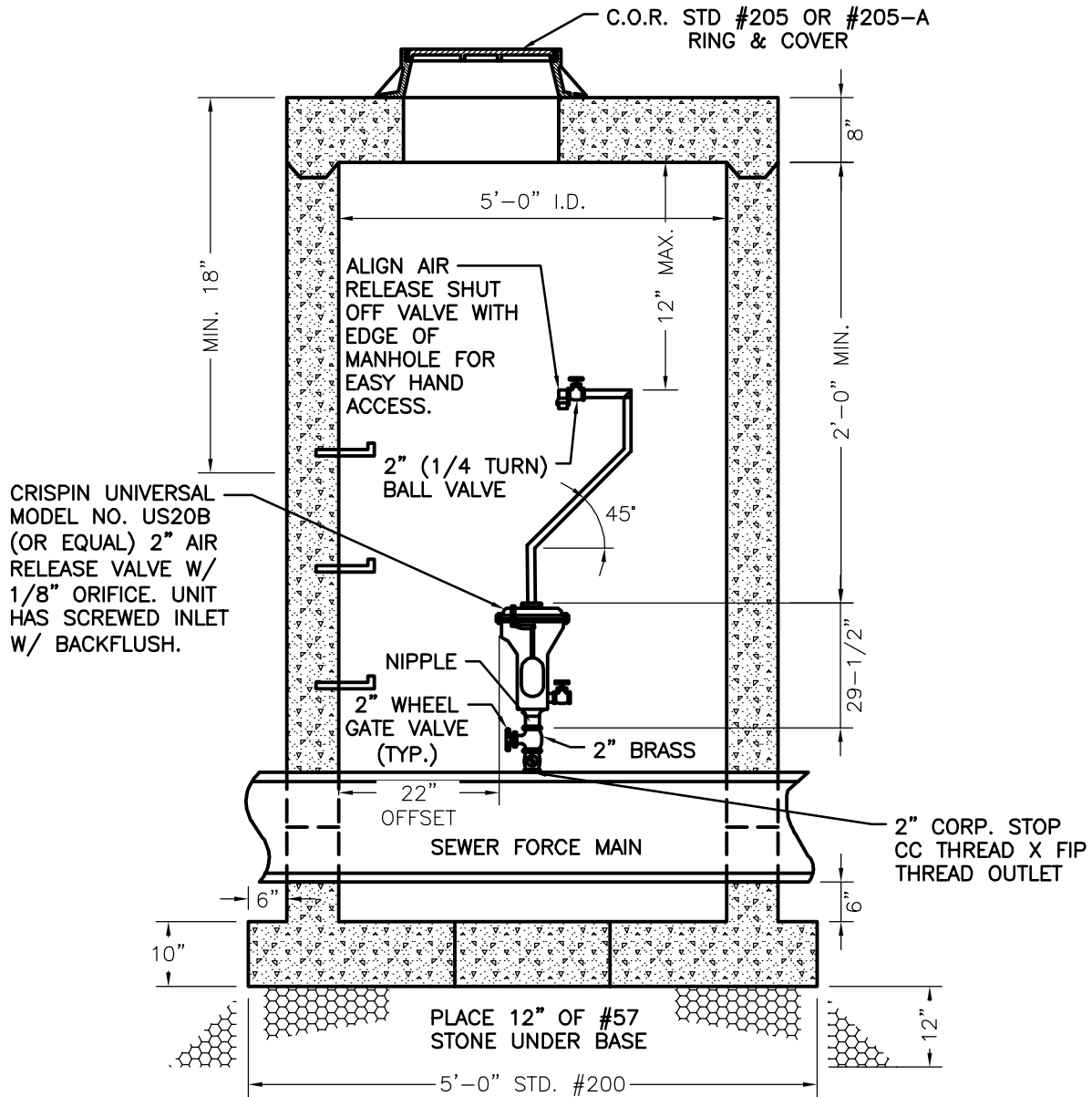
STEEL REINFORCING SHALL MEET ASTM C-185 (4" DIA) OR ASTM-478 (5" DIA).

MANHOLES OVER 3'-6" IN DEPTH SHALL BE PROVIDED WITH STEPS 16" ON CENTERS. STEPS SHALL BE IN ACCORDANCE WITH C.O.R. STD #206.

ON NEW INSTALLATION A MAXIMUM OF (2) GRADE RINGS CAN BE USED.

FOR FORCE MAINS LESS THAN 8" IN DIAMETER USE ROCKWELL SERVICE SADDLE 323, FORD, MUELLER, OR EQUAL.

ALL PIPE TO BE MINIMUM 2" BRASS AND NIPPLES TO BE 2" BRASS.



SECTION THRU MANHOLE

CITY OF REIDSVILLE

STANDARD AIR RELIEF VALVE WITH ASSEMBLY AND MANHOLE FOR SANITARY SEWER LINES

STD. NO.

REV.

211