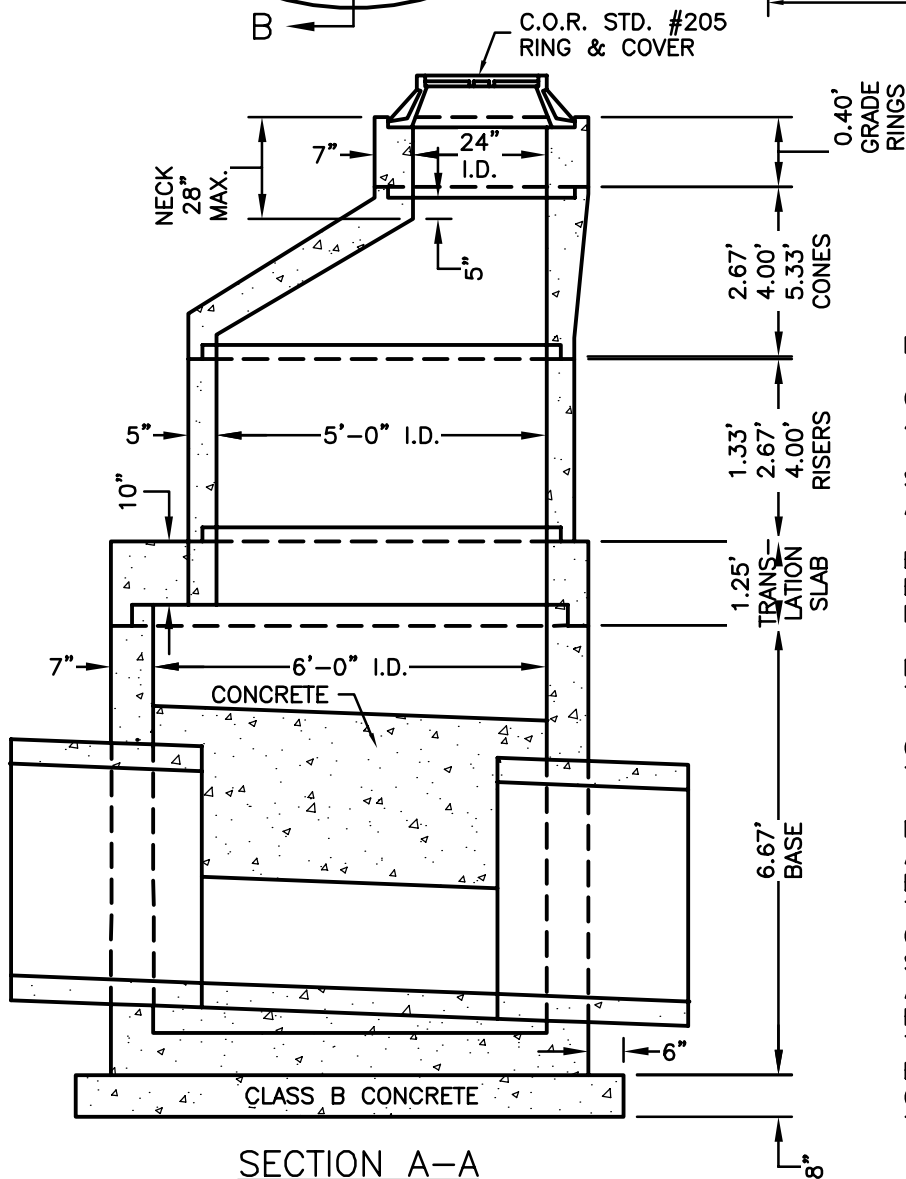


SECTION B-B



SECTION A-A

NOTES:

CONCRETE SHALL BE CLASS AA, 4000 PSI AS PER ASTM C-478.

STEEL REINFORCING SHALL MEET ASTM-615.

EIGHT INCH CONCRETE BOTTOM TO BE POURED AFTER MANHOLE IS SET IN PLACE ON BRICKS.

MAXIMUM USABLE PIPE DIAMETER FOR THIS MANHOLE IS 48 INCHES.

ON NEW INSTALLATION A MAX. OF TWO GRADE RINGS SHALL BE USED.

MANHOLE JOINTS SHALL CONFORM TO ASTM C-361. JOINT SEALANT SHALL BE RUBBER GASKETS CONFORMING TO ASTM C-443, OR BUTYL RUBBER CONFORMING TO FEDERAL SPECIFICATION SS-S-210A, OR AASHTO M-198, TYPE B BUTYL RUBBER. IF BUTYL RUBBER IS USED, THE SURFACE OF THE JOINT SHALL BE COATED WITH AN ADHESIVE COATING TO ASSURE SEAL BETWEEN THE RUBBER AND THE CONCRETE.

DATE: 3/1/14

# CITY OF REIDSVILLE

STANDARD 6' I.D. ECCENTRIC PRECAST CONCRETE  
SANITARY MANHOLE WITH MONOLITHIC BOTTOM

STD. NO.

209

REV.