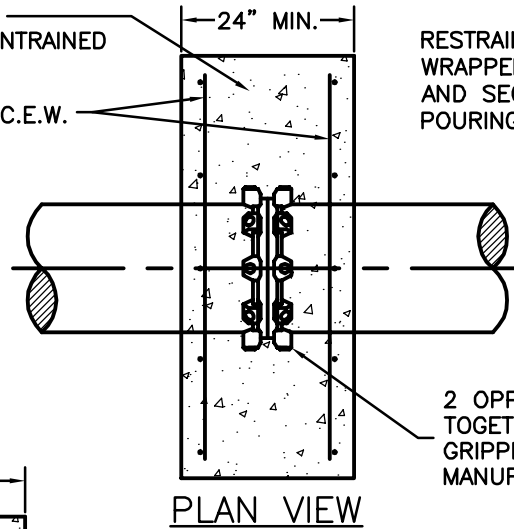


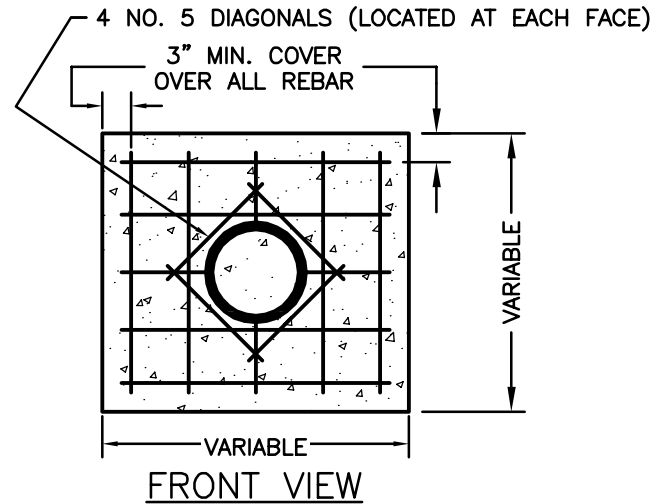
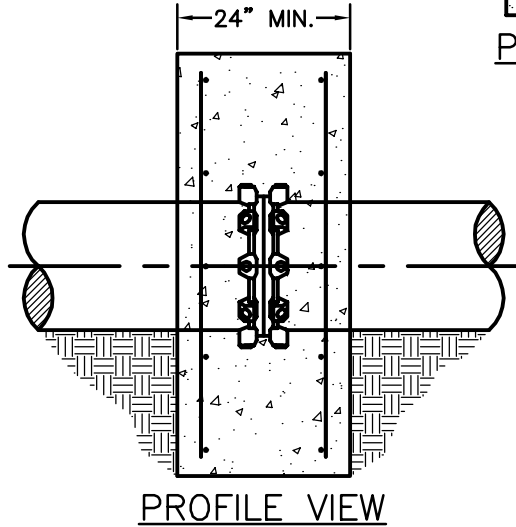
THRUST BLOCK - MINIMUM
3,000 PSI CONCRETE
CLASS A, NON-AIR ENTRAINED

NO. 5 @ 12" O.C.E.W.

RESTRAINING GLANDS SHALL BE
WRAPPED WITH POLYETHYLENE
AND SECURED PRIOR TO
POURING CONCRETE.



2 OPPOSING RESTRAINING GLANDS BOLTED
TOGETHER WITH STAINLESS STEEL BOLTS.
GRIPPING WEDGES SHALL BE TORQUED TO
MANUFACTURERS SPECIFICATIONS.



NOTES:

1. THRUST BLOCK SHALL BE ORIENTED APPROXIMATELY CENTER OF PIPE JOINT.
2. *OPTIONAL* A WELDED COLLAR (INSTALLED BY PIPE MANUFACTURER) MAY BE USED IN LIEU OF RESTRAINING GLANDS. ALL OTHER DESIGN REQUIREMENTS SHALL APPLY AS SHOWN.
3. FOR PIPES LARGER THAN 12" DIAMETER, THE DEADMAN THRUST RESTRAINT WITH BLOCKING MUST BE DESIGNED AND SEALED BY A N.C. PROFESSIONAL ENGINEER.
4. ANY PROPOSED MODIFICATIONS TO THIS STANDARD BASED ON THE FIELD CONDITIONS MUST BE PRE-APPROVED BY THE CITY OF REIDSVILLE FIELD INSPECTOR AND/OR THE ENGINEER OF RECORD.
5. QUANTITIES SHOWN BELOW ARE TO THE NEAREST QUARTER YARD AND ARE BASED ON MINIMUM MASS WEIGHT REQUIREMENTS OF THE TEST PRESSURES SHOWN.

MINIMUM CUBIC YARDS OF CONCRETE REQUIRED			
PIPE DIAMETER	150 PSI TEST PRES.	200 PSI TEST PRES.	250 PSI TEST PRES.
6"	1.00	1.50	1.75
8"	2.00	2.50	3.25
10"	3.00	4.00	5.00
12"	4.25	5.50	7.00

DATE: 3/1/14

CITY OF REIDSVILLE

DEADMAN THRUST RESTRAINT WITH MASS WEIGHT
BLOCKING FOR DUCTILE IRON PIPE

STD. NO.

REV.

118