

NOTES:

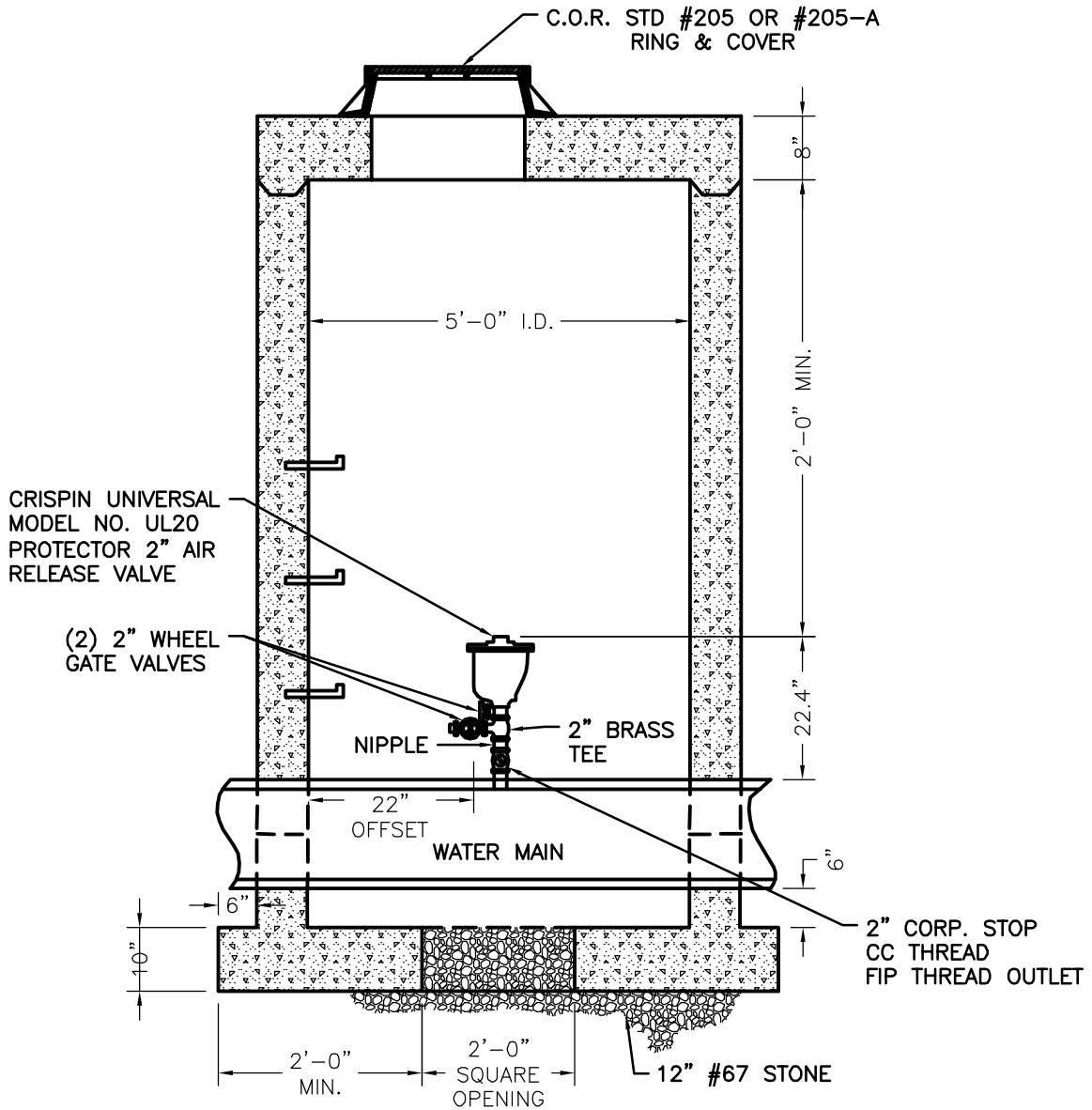
CONCRETE SHALL BE CLASS AA, 4,000 PSI AS PER ASTM-478.

STEEL REINFORCING SHALL MEET ASTM C-185 (4" DIA) OR ASTM-478 (5" DIA).

MANHOLES OVER 3'-6" IN DEPTH SHALL BE PROVIDED WITH STEPS 16" ON CENTERS.
STEPS SHALL BE IN ACCORDANCE WITH C.O.R. STD #206.

ON NEW INSTALLATION A MAXIMUM OF (2) GRADE RINGS CAN BE USED.

ALL PIPE TO BE MINIMUM 2" BRASS AND NIPPLES TO BE 2" BRASS.



SECTION THRU MANHOLE

DATE: 3/1/14

CITY OF REIDSVILLE

STANDARD AIR RELIEF VALVE WITH ASSEMBLY
AND MANHOLE FOR WATER LINES

STD. NO.

REV.

116