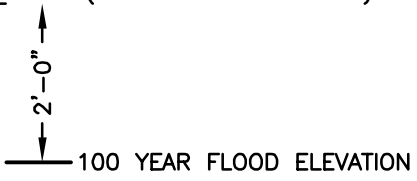


DETAIL ALIGNMENT

4" TEE WITH STAINLESS STEEL HARDWARE CLOTH (SEE DETAIL ALIGNMENT)



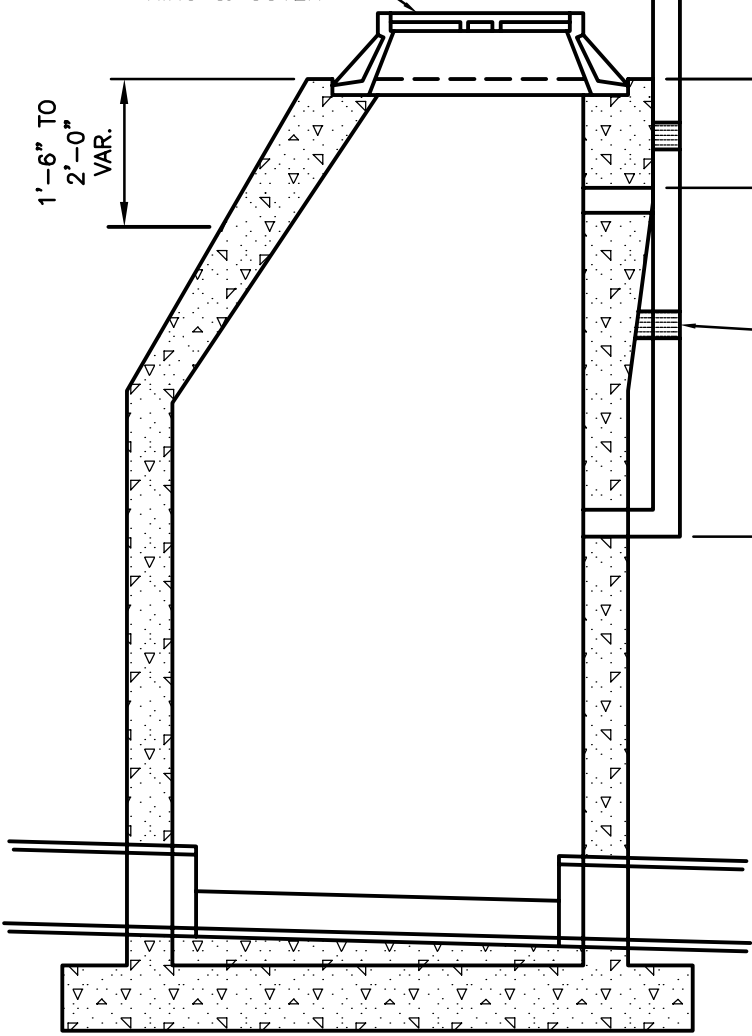
100 YEAR FLOOD ELEVATION

* VARIES

* MATERIALS NOTE:
 < 6'-0" USE 4" DIA. SCH. 80 PVC
 > 6'-0" USE 4" DIA. STEEL PIPE WITH EPOXY COATING THAT MEETS AWWA C210 STD. PIPE COATED INSIDE & OUT (BLACK)

C.O.R. STD. #205-B RING & COVER

1'-6" TO 2'-0" VAR.



INSTALL 3" STAINLESS STEEL BANDS (MIN. 2) APPROX. 4'-0" OR AS DIRECTED BY ENGINEER

3'-0" MAX.

NOTE:
 USE ON OUTFALLS WHERE DIRECTED BY ENGINEER

SECTION A-A

DATE: 3/1/14

CITY OF REIDSVILLE

STANDARD ECCENTRIC PRECAST CONCRETE SANITARY MANHOLE WITH EXPANDED BASE (VENTED MANHOLE DETAIL)

STD. NO.	REV.
212	